



**Shreya**<sup>®</sup>  
Sanitary Product

*Catalogue*  
**2023**

**BATH ACCESSORIES PRODUCTS**



[www.shreyarackbolt.com](http://www.shreyarackbolt.com)

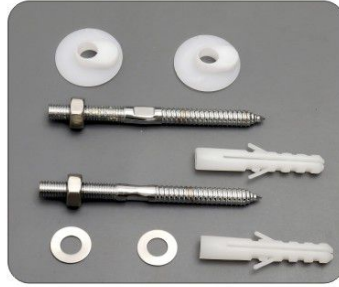
**MI - 101**



**5/8 Wall Hung Rack Bolt**

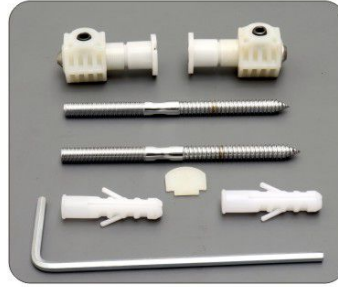
Code	Size		Weight	M.R.P
	mm	inch		
				SS 202
MI-101	16X165	5/8 X 6.5	520gm.	520.00
MI-101-B	16X220	5/8 X 9	660gm.	650.00
MI-102	9X115	3/8 X 4.5	120gm.	145.00

**MI - 102**



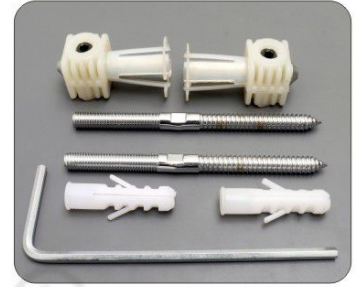
**Wash Basin Rack Bolt**

**MI - 103**



**12mm L-Key Jaquar Type Rack Bolt**

**MI - 104**



**12mm L-Key Square Type Rack Bolt**

Code	Size		Weight	M.R.P
	mm	inch		
				SS 202
MI-103	12X165	12 X 6.5	580gm.	700.00
MI-104	12X165	12 X 6.5	580gm.	700.00

**MI - 105**



**12mm Rack Bolt with Cap**

**MI - 106**



**12mm Rack Bolt Without Cap**

Code	Size		Weight	M.R.P
	mm	inch		
				SS 202
MI-105	12 x 165	12 x 6.5	320gm.	435.00
MI-106	12 x 165	12 x 6.5	280gm.	385.00

**MI - 107**



**12mm Rod Set**

**MI - 108**



**T Type Rack Bolt**

Code	Size		Weight	M.R.P
	mm	inch		
				SS 202
MI-107	12 x 165	12 x 6.5	-	334.00
MI-108	16 x 175	5/8 x 7	680gm.	670.00
MI-108-B	16 x 225	5/8 x 9	820gm.	800.00

**MI - 109**



**Y Type Rack Bolt**

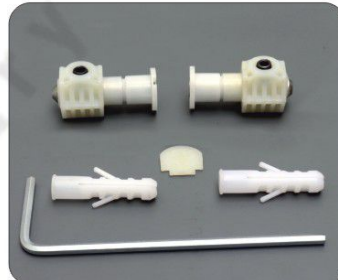
**MI - 110**



**Urinal Bracket**

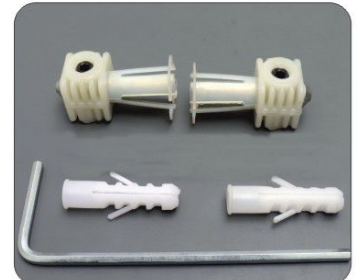
Code	Size		Weight	M.R.P
	mm	inch		
				SS 202
MI-109	16 x 175	5/8 x 7	790gm.	800.00
MI-110	-	-	-	200.00

**MI - 111**



**12mm L-Key Kit**

**MI - 112**



**12mm L-Key Square Kit**

Code	Size		Weight	M.R.P
	mm	inch		
				SS 202
MI-111	-	-	-	400.00
MI-112	-	-	-	400.00

**MI - 201**



**MS 5/8 Wall Hung Rack Bolt**

**MI - 202**



**MS Wash Basin Rack Bolt**

**MI - 203**



**MS Urinal Bracket**

**MI - 204**



**MS Wall Hung Adjustable Bracket**

Code	Size		Weight	M.R.P
	mm	inch		
MI-201	16x165	5/8 x 165	580gm.	370.00
MI-202	10x120	3/8 x 4.75	140gm.	90.00

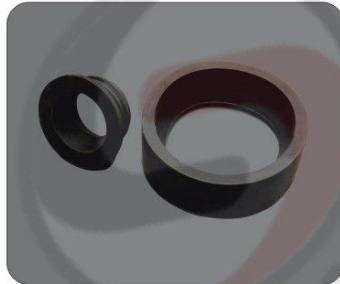
Code	Size		Weight	M.R.P
	mm	inch		
MI-203	-	-	-	100.00
MI-204	12x160	12x6	1.300gm.	733.00

**MI - 205**



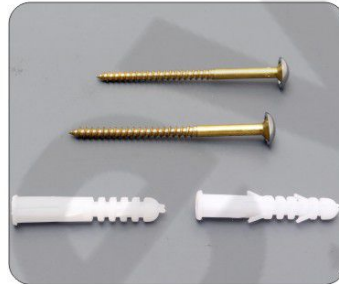
**Floor Mounting Kit**

**MI - 206**



**Wall Hung Commode Rubber Kit**

**MI - 207**

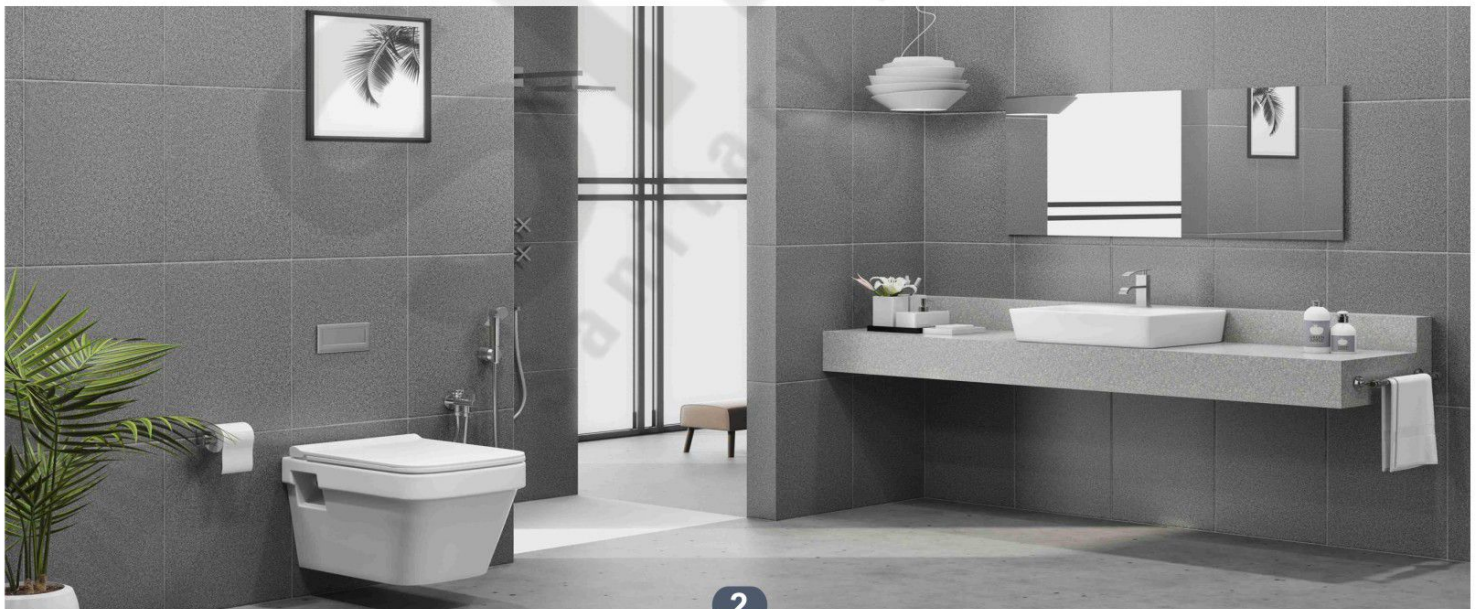


**Floor Mounting Kit Brass**



Code	Size		M.R.P	
	mm	inch	MS	SS 202
MI-205	10x75	3	40.00	60.00
MI-205-B	10x100	4	55.00	93.00
MI-206	-	4	-	93.00

Code	Size		Weight	M.R.P
	mm	inch		
MI-207	10 x 75	3	-	95.00
MI-207-B	10 x 100	4	-	140.00



**MI - 401**



**Tiles Insert Channel**

Code	Size		option Hole	Weight	M.R.P
	mm	inch			
					AISI 304
MI-401-A	100x300	4 x 12	Side/Center	840gm.	3000.00
MI-401-B	100x450	4 x 18	Side/Center	1.160gm.	4500.00
MI-401-C	100x600	4 x 24	Side/Center	1.475gm.	6000.00
MI-401-D	100x750	4 x 30	Side/Center	1.800gm.	7500.00
MI-401-E	100x900	4 x 36	Side/Center	2.120gm.	9000.00

**MI - 402**



**Shower Channel**

Code	Size		option Hole	Weight	M.R.P
	mm	inch			
					AISI 304
MI-402-A	100x300	4 x 12	Side/Center	830gm.	2800.00
MI-402-B	100x450	4 x 18	Side/Center	1.210gm.	4200.00
MI-402-C	100x600	4 x 24	Side/Center	1.590gm.	5600.00
MI-402-D	100x750	4 x 30	Side/Center	1.970gm.	7000.00
MI-402-E	100x900	4 x 36	Side/Center	2.350gm.	8400.00

**MI - 403**



**Shower Channel**

Code	Size		option Hole	Weight	M.R.P
	mm	inch			
					AISI 304
MI-403-A	100x300	4 x 12	Side/Center	830gm.	2800.00
MI-403-B	100x450	4 x 18	Side/Center	1.210gm.	4200.00
MI-403-C	100x600	4 x 24	Side/Center	1.590gm.	5600.00
MI-403-D	100x750	4 x 30	Side/Center	1.970gm.	7000.00
MI-403-E	100x900	4 x 36	Side/Center	2.350gm.	8400.00

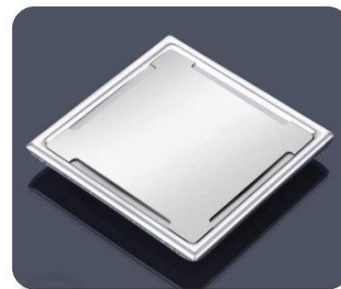
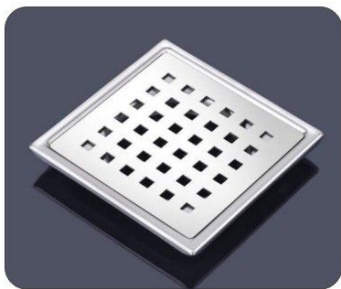
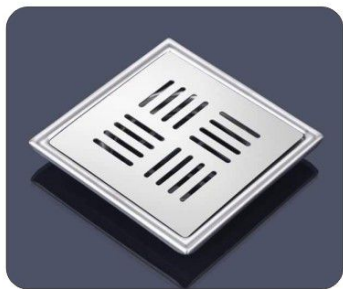
**MI - 404**



**Shower Channel**

Code	Size		option Hole	Weight	M.R.P
	mm	inch			
					AISI 304
MI-404-A	100x300	4 x 12	Side/Center	830gm.	2800.00
MI-404-B	100x450	4 x 18	Side/Center	1.210gm.	4200.00
MI-404-C	100x600	4 x 24	Side/Center	1.590gm.	5600.00
MI-404-D	100x750	4 x 30	Side/Center	1.970gm.	7000.00
MI-404-E	100x900	4 x 36	Side/Center	2.350gm.	8400.00





**Floor Trap Drainer**

Code	Size		Weight	M.R.P	
	mm	inch		SS 202	SS 304
MI-501	125x125	5x5	235gm.	400.00	470.00
MI-601	150x150	6x6	330gm.	450.00	650.00
MI-502	125x125	5x5	235gm.	400.00	470.00
MI-602	150x150	6x6	330gm.	450.00	650.00

**Floor Trap Drainer**

Code	Size		Weight	M.R.P	
	mm	inch		SS 202	SS 304
MI-503	125x125	5x5	235gm.	400.00	470.00
MI-603	150x150	6x6	330gm.	450.00	650.00
MI-504	125x125	5x5	235gm.	400.00	470.00
MI-604	150x150	6x6	330gm.	450.00	650.00



**Floor Trap Drainer With Hole**

Code	Size		Weight	M.R.P	
	mm	inch		SS 202	SS 304
MI-511	125x125	5x5	235gm.	400.00	470.00
MI-611	150x150	6x6	330gm.	450.00	650.00
MI-512	125x125	5x5	235gm.	400.00	470.00
MI-612	150x150	6x6	330gm.	450.00	650.00

**Floor Trap Drainer With Hole**

Code	Size		Weight	M.R.P	
	mm	inch		SS 202	SS 304
MI-513	125x125	5x5	235gm.	400.00	470.00
MI-613	150x150	6x6	330gm.	450.00	650.00
MI-514	125x125	5x5	235gm.	400.00	470.00
MI-614	150x150	6x6	330gm.	450.00	650.00



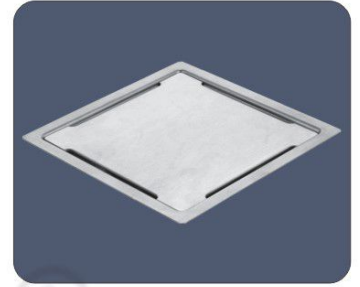
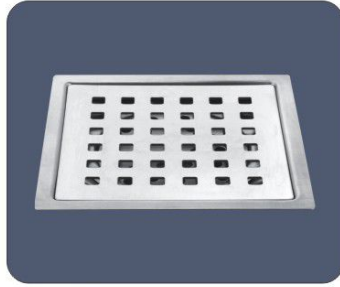
**Tiles Insert Drainer**

Code	Size		Weight	M.R.P
	mm	inch		
MI-410	100x100	4x4	-	1500.00
MI-505	125x125	5x5	455gm.	1630.00
MI-605	150x150	6x6	700gm.	1830.00



**Anti Cockroach Trap**

Code	Size		Weight	M.R.P
	mm	inch		
MI-506	125x125	5x5	100gm.	500.00
MI-606	150x150	6x6	1500gm.	570.00



**Flat Cut Floor Trap Drainer**

Code	Size		Weight	M.R.P
	mm	inch		
				SS 304
MI-521	125x125	5x5	215gm.	470.00
MI-621	150x150	6x6	310gm.	650.00
MI-522	125x125	5x5	215gm.	470.00
MI-622	150x150	6x6	310gm.	650.00

**Flat Cut Floor Trap Drainer**

Code	Size		Weight	M.R.P
	mm	inch		
				SS 304
MI-523	125x125	5x5	215gm.	470.00
MI-623	150x150	6x6	310gm.	650.00
MI-524	125x125	5x5	215gm.	470.00
MI-624	150x150	6x6	310gm.	650.00



**Flat Cut Floor Trap Drainer With Hole**

Code	Size		Weight	M.R.P
	mm	inch		
				SS 304
MI-531	125x125	5x5	215gm.	470.00
MI-631	150x150	6x6	310gm.	650.00
MI-532	125x125	5x5	215gm.	470.00
MI-632	150x150	6x6	310gm.	650.00

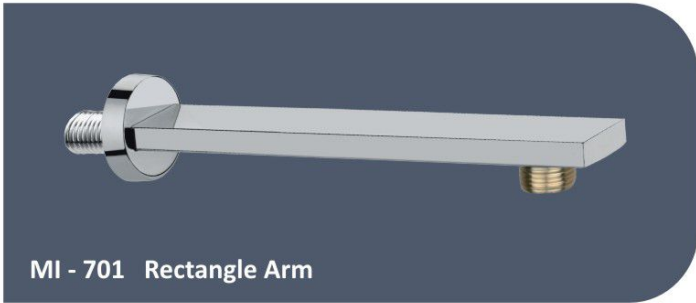
**Flat Cut Floor Trap Drainer With Hole**

Code	Size		Weight	M.R.P
	mm	inch		
				SS 304
MI-533	125x125	5x5	215gm.	470.00
MI-633	150x150	6x6	310gm.	650.00
MI-534	125x125	5x5	215gm.	470.00
MI-634	150x150	6x6	310gm.	650.00



**Double Decker Towel Rack**

Code	Size	Weight	M.R.P	
			SS 202	SS 304
MI-1010	18	1.000gm.	2200.00	3370.00
MI-1011	24	1350gm.	2370.00	3600.00



**MI - 701 Rectangle Arm**

Size	9"	12"	15"	18"	24"
S.S. 202	293.00	390.00	475.00	570.00	760.00



**MI - 702 Oval Arm**

Size	9"	12"	15"	18"	24"
S.S. 202	293.00	390.00	475.00	570.00	760.00



**MI - 703 Round Arm**

Size	9"	12"	15"	18"	24"
S.S. 202	293.00	390.00	475.00	570.00	760.00



**MI - 704 Square Cross Arm**

Size	9"	12"	15"	18"	24"
S.S. 202	293.00	390.00	475.00	570.00	760.00



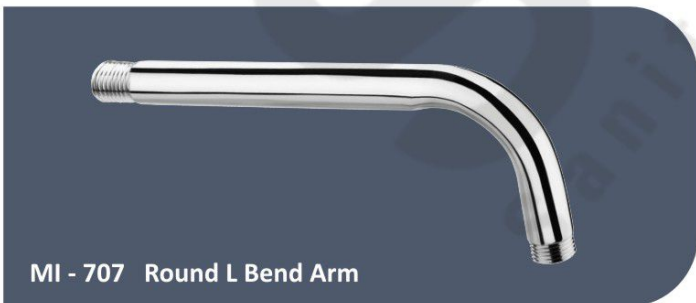
**MI - 705 Square Arm**

Size	9"	12"	15"	18"	24"
S.S. 202	293.00	390.00	475.00	570.00	760.00



**MI - 706 Half Bend Round Arm**

Size	9"	12"	15"	18"	24"
S.S. 202	240.00	320.00	-	-	-



**MI - 707 Round L Bend Arm**

Size	9"	12"	15"	18"	24"
S.S. 202	-	320.00	400.00	480.00	640.00



**MI - 708 Kalam Arm**

Size	6"	7"	9"		
S.S. 202	160.00	190.00	250.00		



# Shreya<sup>®</sup>

Sanitary Product



Mfg. By :

## MADHUSADAN INDUSTRIES

📍 Pragati Society Street No.3, Opp. Jaydat Pan,  
Balaji Refrigeration Street, Bolbala Marg,  
Dhebar Road (South), Rajkot - 360002. Gujarat

✉ info.madhusadanindustries8@gmail.com

🌐 www.shreyarackbolt.com



एक कदम स्वच्छता की ओर



We Support "MAKE IN INDIA" Campaign



High Strength



Perfect Finish



Better Quality

